



Pony Testing International Group

**Test Report**

No.: BZCUYT0F72633704

Date: 2015.12.14

Page 1 of 4

Applicant:

Suzhou Howsine Biological Technology Co.,Ltd

The following sample(s) was/were submitted and identified on behalf of the client as:

Sample Name: 2,3-Dibromo-2-butene-1,4-diol

Sample Received Date: 2015.12.10

Testing Period: 2015.12.10 to 2015.12.14

Reference Requested: RoHS Directive 2011/65/EU & (EU)2015/863 Annex II

Test Methods:

(1) IEC 62321-5 Edition 1.0:2013 method, Lead Analysis is performed by AAS

(2) IEC 62321-5 Edition 1.0:2013 method, Cadmium Analysis is performed by AAS

(3) IEC 62321-4 Edition 1.0:2013 method, Mercury Analysis is performed by ICP-OES

(4) IEC 62321 Edition 1.0:2008 method, Hexavalent Chromium Analysis is performed by UV-Vis

(5) IEC 62321 Edition 1.0:2008 method, PBBs and PBDEs Analysis is performed by GC-MS

Test Result:

Please refer to next page(s)

Approved by:

Code: p2rw752

The page below is blank.



**PONY** 增尼测试

www.ponytest.com

Hotline 400-819-5688

BeijingLab: (010)82618116

ChangchunLab: (0431)85150908

ShanghaiLab: (021)64851999

ShenzhenLab: (0755)26050909

QingdaoLab: (0532)88706866

DalianLab: (0411)84650820

NingboLab: (0574)87736499

GuangzhouLab: (020)89224310

TianjinLab: (022)27360730

ZhengzhouLab: (0371)69350670

HangzhouLab: (0571)87219096

WuhanLab: (027)83997127



Pony Testing International Group

Test Report

No.: BZCUYT0F72633704

Date: 2015.12.14

Page 2 of 4

Test Result (Unit: mg/kg)

Test Item	MDL	Test Result	RoHS Limit
Lead (Pb)	1	N.D.	1000
Cadmium (Cd)	1	N.D.	100
Mercury (Hg)	1	N.D.	1000
Hexavalent Chromium (Cr <sup>6+</sup> )	1	N.D.	1000
Sum of PBBs	—	N.D.	1000
Bromobiphenyl	5	N.D.	—
Dibromobiphenyl	5	N.D.	—
Tribromobiphenyl	5	N.D.	—
Tetrabromobiphenyl	5	N.D.	—
Pentabromobiphenyl	5	N.D.	—
Hexabromobiphenyl	5	N.D.	—
Heptabromobiphenyl	5	N.D.	—
Octabromobiphenyl	5	N.D.	—
Nonabromobiphenyl	5	N.D.	—
Decabromobiphenyl	5	N.D.	—
Sum of PBDEs	—	N.D.	1000
Bromodiphenyl ether	5	N.D.	—
Dibromodiphenyl ether	5	N.D.	—
Tribromodiphenyl ether	5	N.D.	—
Tetrabromodiphenyl ether	5	N.D.	—
Pentabromodiphenyl ether	5	N.D.	—
Hexabromodiphenyl ether	5	N.D.	—
Heptabromodiphenyl ether	5	N.D.	—
Octabromodiphenyl ether	5	N.D.	—
Nonabromodiphenyl ether	5	N.D.	—
Decabromodiphenyl ether	5	N.D.	—

The page below is blank.

www.ponytest.com Hotline 400-819-5688



BeijingLab: (010)82618116

ChangchunLab: (0431)85150908

ShanghaiLab: (021)64851999

ShenzhenLab: (0755)26050909

QingdaoLab: (0532)88706866

DalianLab: (0411)84650820

NingboLab: (0574)87736499

GuangzhouLab: (020)89224310

TianjinLab: (022)27360730

ZhengzhouLab: (0371)69350670

HangzhouLab: (0571)87219096

WuhanLab: (027)83997127

## Test Report

No.: BZCUYT0F72633704

Date: 2015.12.14

Page 3 of 4

Note: (1) mg/kg = ppm

(2) “—” = Does not stipulate

(3) N.D. = Not Detected (<MDL)

(4) MDL = Method Detection Limit

(5) The most allowable limit value reference to RoHS Directive 2011/65/EU & (EU)2015/863 Annex II

Sample No. &Photo:



Pony authenticate the photo on original report only

The page below is blank.

**Test Report**

No.: BZCUYT0F72633704

Date: 2015.12.14

Page 4 of 4

Measurement Flow-chart

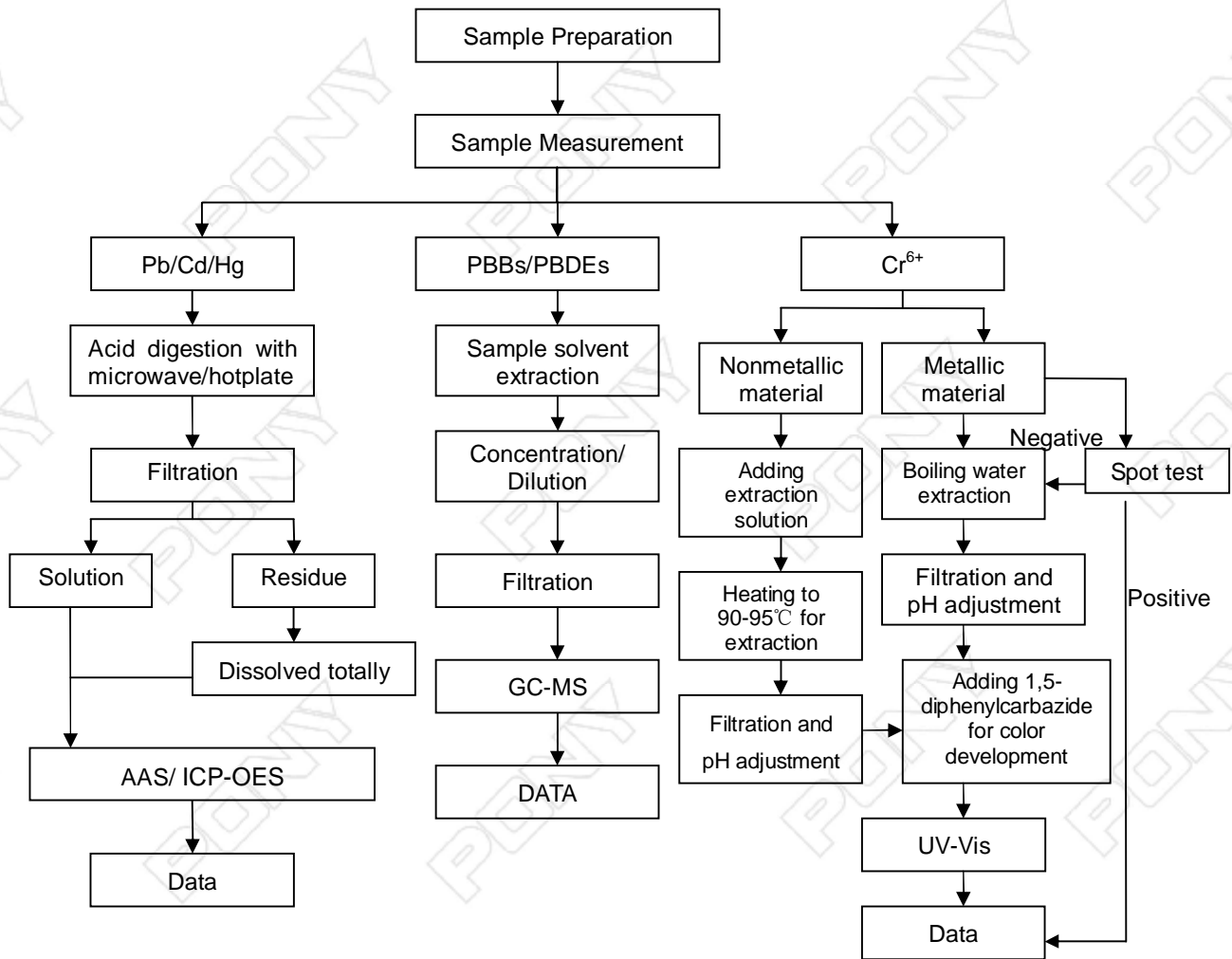
Tested by: Zhu Yun

Checked by: Wang Yunxia

Person in charge of the lab: Zhang Daiqin

These Samples Were Dissolved Totally By Pre-conditioning Method According To Below Flow Chart.

(Cr<sup>6+</sup> And PBBs/PBDEs Test Method Excluded)



\*\*\*End of Report\*\*\*